



**MINISTRY ORDER NO.** 020 pm  
**Series of 2023**

## **GUIDELINES ON THE ESTABLISHMENT AND IMPLEMENTATION OF PROGRAMS OF THE CHILD LABOR PROTECTION UNIT**

### **1. RATIONALE**

The Philippines has long been staunch advocate on the elimination of Child Labor because it is illegal. Child Labor is a work that deprive children of their childhood, being compromised to enjoy their rights to be loved and cared for, to be educated, to be healthy and to develop their skills which is deeply rooted in poverty. In support of the Ministry of Labor and Employment (MOLE) Bangsamoro Child Labor Sagip Program (BCLSP) and to strengthen it, Child Labor Protection Unit (CLPU) is hereby established in Bangsamoro Autonomous Region in Muslim Mindanao (BARMM). Under CLPU, the programs, projects, activities are orientation, advocacy, capacity building, alliances, networking, monitoring and evaluation of the existing child labor.

To properly implement the program, this Guidelines on the Establishment and Implementation of Programs of the CLPU is hereby adopted.

### **2. PROGRAM DESCRIPTION**

The Child Labor Protection Unit (CLPU) is a unit that will oversee the implementation, orientation, advocacy, capacity building, alliances, networking, monitoring, reporting, and evaluation of child labor in the BARMM. It shall be established in the MOLE Regional Office (RO) and its Field Office (FO) in provinces and cities of BARMM. The CLPU shall be under the Bureau of Employment Promotion and Welfare (BEPW). The CLPU in the MOLE-RO will head and supervise the CLPU- FO.

The functions for the implementation of the CLPU are the following:

- a. Advocacy – means to initiate, coordinate and conduct of focus group discussion, orientation, awareness raising, lobbying for the legislative and social mobilization to support the programs on Child Labor. Partner with ministries, academe, non-governmental organization (NGO), tripartite and social partners, media, business, workers, employers and law enforces in its advocacy programs.
- b. Capacity Building – aims to capacitate the concern stakeholders such as implementors, LGUs, children under child labor and their parents.



- c. Building alliances/networking/coordination – are the linkages to local, national and international organizations in order to strengthen the implementation of programs on child labor; prepare and facilitate meeting and inter-agency plan, programs and convergence with concern partners, ministries, LGUs and stakeholders. Further, it provides support and technical advice to colleagues and partner agencies on elimination of child labor.
- d. Mainstreaming - the CLPU and its alliances shall lobby for the mainstreaming of Child labor agenda in the Bangsamoro Parliament and related programs of the governments up to the grassroots level. It ensures that child labor programs are included in annual work plan and budget.
- e. Monitoring, Evaluation and Reporting - Monitoring will be conducted to assess and evaluate the implementation of the CLPU programs. The result will serve as a basis to enhance the strategy of implementation of its programs. There shall be documentation and submission of reports to the concern heads (focal persons, chief, directors or minister). It also refers to Coordination and facilitation of joint monitoring process with MOLE RO CLPU, FO CLPU and even NGO; and maintaining records of activities implemented and collation of records /reports from implementing partners.

### **3. OBJECTIVES**

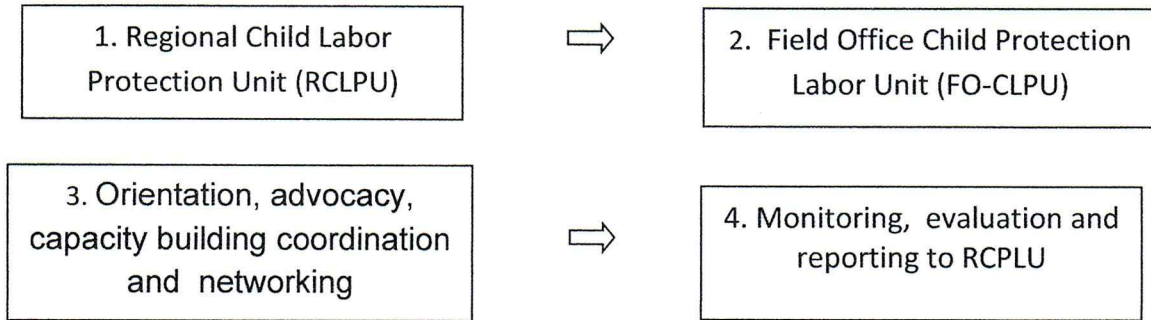
The program aims to support the elimination of the worst form of child labor and protect children against child abuse, exploitation and discrimination act through the establishment of CLPU.

The CLPU aims to hasten the effective implementation of child labor programs in the BARMM. The CLPU will bring child labor programs in the grassroots level. The CLPU shall respond and take immediate action with the assistance of Local Government Units (LGU's), concerned ministries, institutions and authorities on the reports of child labor issues and problems.



#### 4. PROCESS FLOW CHART

To guide the MOLE RO and FOs on the process of CLPU program implementation, the diagram below shall be followed:



#### 5. CHILD LABOR PROTECTION UNITS (CLPU) FUNCTIONS

##### 5.1 MOLE Regional CLPU Office

- 5.1.1 Advocate for prevention and elimination through CL program and legislation.
- 5.1.2 Establish link and network of Bangsamoro Regional Action Plan on Child Labor (BRAP-CL) with national and international initiatives.
- 5.1.3 Supervise and monitor the implementation of programs, project, activities of CLPU-FO.

##### 5.2 MOLE Field Office - CLPU

The Ministry through its FOs will implement and conduct CLPU programs such as

- 5.2.1 Orientation and advocacy in the prevention, and elimination of child labor;
- 5.2.2. Conduct orientation on Financial Literacy and Basic Entrepreneurship before the Bangsamoro Child Labor Sagip Program financial and educational assistance;
- 5.2.3 Capacity building, alliances/linkages/networking, databanking; and
- 5.2.4 Others programs, projects, activities related to child labor.

#### 6. MONITORING, EVALUATION and REPORTING

The RO and FO CLPUs will evaluate, monitor and submit periodic reports on the implementation of the its programs.



**12. Repealing Clause**

All prior orders and issuances which are inconsistent with this order are hereby repealed and/or modified accordingly.


**11. Separability Clause**

If any provision or part of this order is held invalid or unconstitutional, the remaining provisions not affected thereof shall remain valid and effective.

**12. Effectivity Clause**

This guidelines shall take effect immediately after its publication in the Bangsamoro Gazette or in a newspaper of regional circulation.

Issued in Cotabato City, BARMM, Philippines this 31<sup>st</sup> day of May 2023.

  
**MUSLIMIN G. SEMA**  
Minister *ds*

Ministry of Labor and Employment  
**OFFICE OF THE MINISTER**  
**RELEASED**  
Date: 5/31/23 Time: 11:13 AM  
By: Tate...  
MOLE-BARMM

Ministry of Labor and Employment  
RECORD SECTION  
**RELEASED**  
Date: MAY 31 2023 Time: 11:14 AM  
By: HARRIET AILAH A. BIRUAR